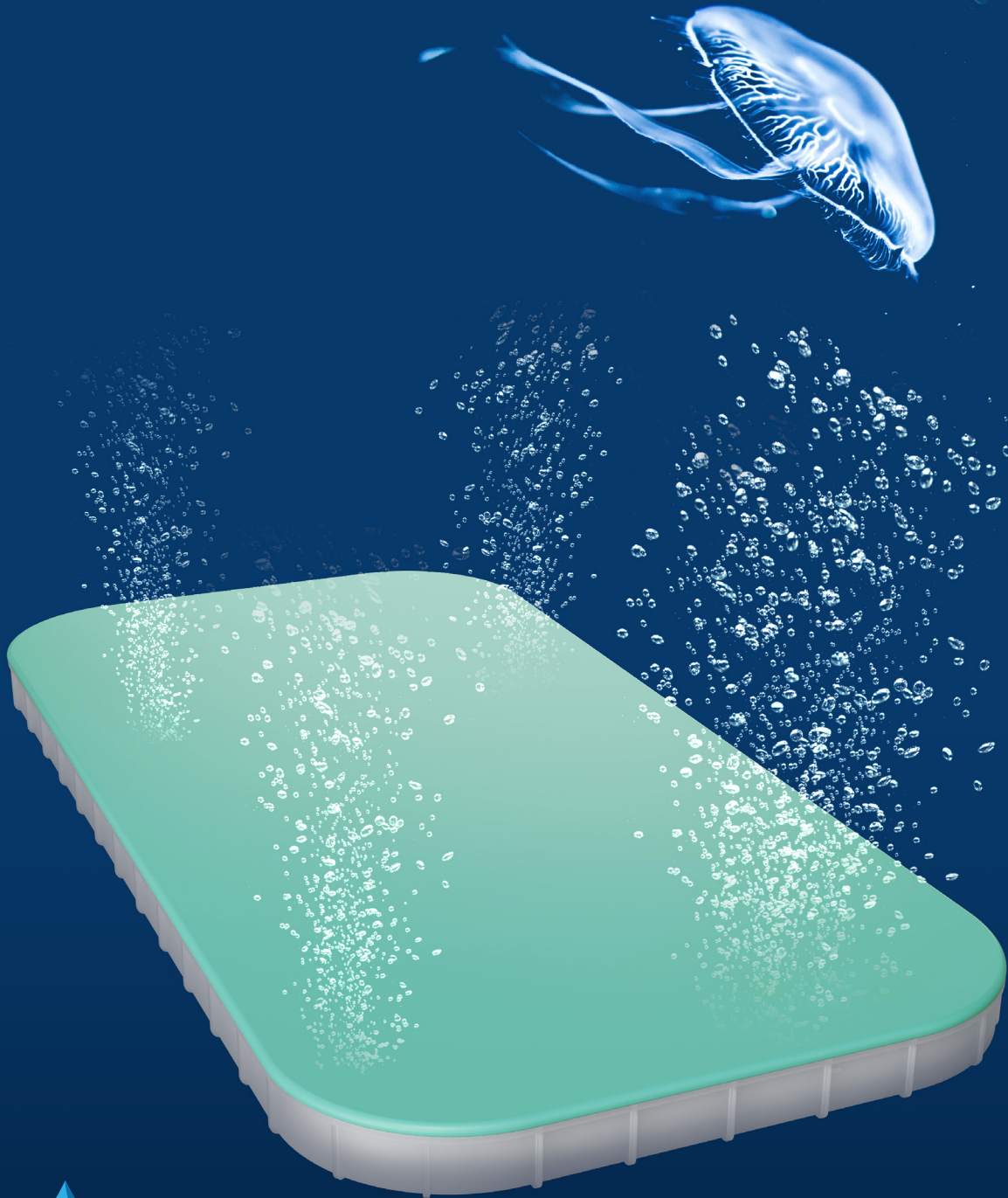


Ecoflex® Plate Silicone/EPDM

Components for water and wastewater treatment

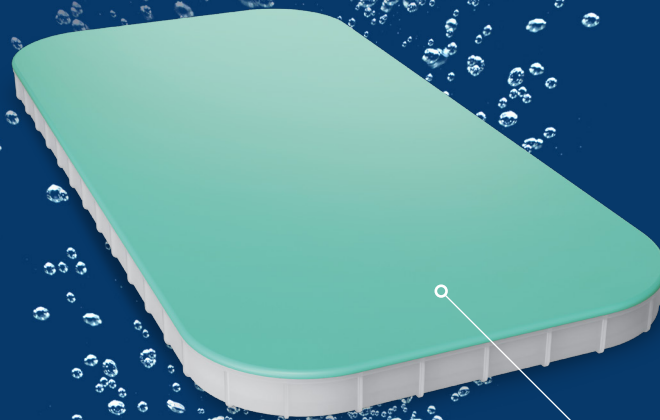


New
MODEL

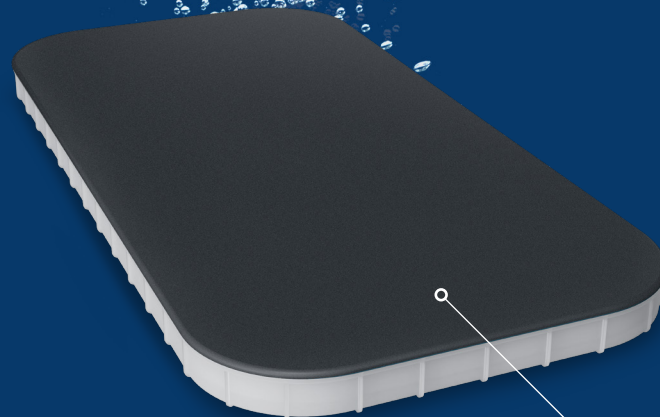
Ecoflex® Plate

PRODUCT PROPERTIES

- Dimension: 500 x 250 mm
- Various connections are available
- Air flow: - min 6 Nmc/h
- max 24 Nmc/h
- Perforated area: 0,12 m²



SILICONE



EPDM



ECOFLEX® PLATE SILICONE, OPERATING RANGE

Model	Pore size μm	Range flow rate (Nm ³ /h) min-max	Optimal flow rate (Nm ³ /h)	Perforated area in m ²	Standard connection	Max temperature Celsius/ Fahrenheit	Operating
ECOPLATE50S	60	6-24	12	0,12	1" M	230°C / 446°F	continous / intermittent
ECOPLATE100S	100	8-28	16	0,12	1" M	230°C / 446°F	continous / intermittent
ECOPLATE150S	150	10-32	20	0,12	1" M	230°C / 446°F	continous / intermittent



ECOFLEX® PLATE EPDM, OPERATING RANGE

Model	Pore size μm	Range flow rate (Nm ³ /h) min-max	Optimal flow rate (Nm ³ /h)	Perforated area in m ²	Standard connection	Max temperature Celsius/ Fahrenheit	Operating
ECOPLATE50S	60	6-24	12	0,12	1" M	130°C / 266°F	continous / intermittent
ECOPLATE100S	100	8-28	16	0,12	1" M	130°C / 266°F	continous / intermittent
ECOPLATE150S	150	10-32	20	0,12	1" M	130°C / 266°F	continous / intermittent



Since 1983 your partner for wastewater treatment products.
Proudly Made in Italy.



CONTACT

Geoteck-Tierre S.R.L.

Phone +39 035 810296

TeleFax + 39 035 810296

email: info@geotierre.com

Via Prato Pieve 54, 24060 Casazza (BG) - ITALY

Certified ISO9001:2015

Geoteck-Tierre SRL
Via Prato Pieve 54
24060 Casazza (BG)
Italy



Azienda con sistema
di gestione qualità
certificato secondo la
Norma ISO9001:2015

Italia

geotierre.com